

THE NEW PICTURE OF HEALTH



HC 291873
Healthcare Center

PATIENT 132-54/B

HISTORY² RECORDS EXAMS DIAGNOSIS¹ RESULTS PRESCRIPTIONS

NEW DATA AVAILABLE

BLOOD STRUCTURE

BLOOD RESULTS

CONTACT
MAIL
INFO

PRESCRIPTION

BY DATE

DATA SOURCES

DATA SETS

PROCESSED DATA FEEDS

ADVANCED ANALYTICS / CLOUD-BASED COMPOSITE DATA

ACTIONABLE INFORMATION

RESULTS

Populytics
Analytics for Population Health Management and Care Coordination

- Predictive Modeling
- Risk Stratification
- Early Stage Disease Management
- Care Gap Targeting
- Care Evaluation by Episode
- Care Management Workflow
- Care Pathway Assessment
- Medical Expense Budget Development

The Care Continuum

Community Care Teams, Patient-Centered Medical Homes, Physician Practices, Corporate Wellness & Coaching, Homecare, Hospice, SNF, Palliative Care, Behavioral Health, Acute & Chronic Condition Management

VALUES

INDICATORS

CONNECTION STATUS

COMMUNAL ACTION	stable
INTERNET	high speed
SATISFY	87%
TIME CONNECTED	14:35
LANGUAGE	English
LOG IN/T	
STAFF EMPLOYED	13
MODEL	25 To 644
PATIENT ID	132-54/B
HC 291873	center
DOCTOR ID	25496

Value-Based Care Through Populytics

Higher Quality and Lower Cost through Value-Based Care

The American health delivery system can and must provide higher quality care at lower cost. To achieve this requires a change from traditional *volume-based care* to a new *value-based care* system.

The difference between the two care models is basic. Volume-based care drives providers to treat more people for sickness. Value-based care rewards providers for keeping more people healthier.

Transitioning to this new care model is complex. At the most fundamental level, it requires a commitment to improvement in two key disciplines: **population health management** and **coordination of care**.

To implement this change, we have developed a new resource which integrates advanced information technology and analytics, with clinical care delivery and health plan management.

The name of this new resource is

Populytics

Population Health Management Analytics

Populytics is the new name for Spectrum Administrators, Inc.

Team. Technology. Together. How Healthier Happens.SM

Populytics is comprised of existing systems and newly-acquired assets tooled into a single, powerful engine for improvement in health care delivery, accountability and service.

Populytics Team: Highly experienced professionals and support staff built around Spectrum Administrators' 26 years of proven experience in managing health care. The Populytics team provides the following specialties:

- Health Care Informatics
- Wellness Programming
- Clinical Operations and Care Management
- Benefit Plan Design
- Claims Adjudication
- Provider Performance Management
- Insurance and Risk Management
- Health Systems/Payment Innovation

Populytics Technology: Extensive data from claims and clinical sources processed with the most advanced knowledge management systems in the health care industry.

Together: Populytics provides scalable solutions enabling the systematic transition from volume-based to value-based care delivery systems.

Populytics SERVICES:

- Group Health Plan Design and Optimization
- Claims Adjudication and Program Administration
- Clinical Services Utilization Management
- Acute and Chronic Care Management
- Loss Experience Reporting, Analysis and Recommendations for Improved Outcomes
- Provider Network Effectiveness Assessment
- Payment Innovation
- Medical Expense Budget Development and Translation to Effective Cost Control Interventions
- Workplace Wellness Programs and Support

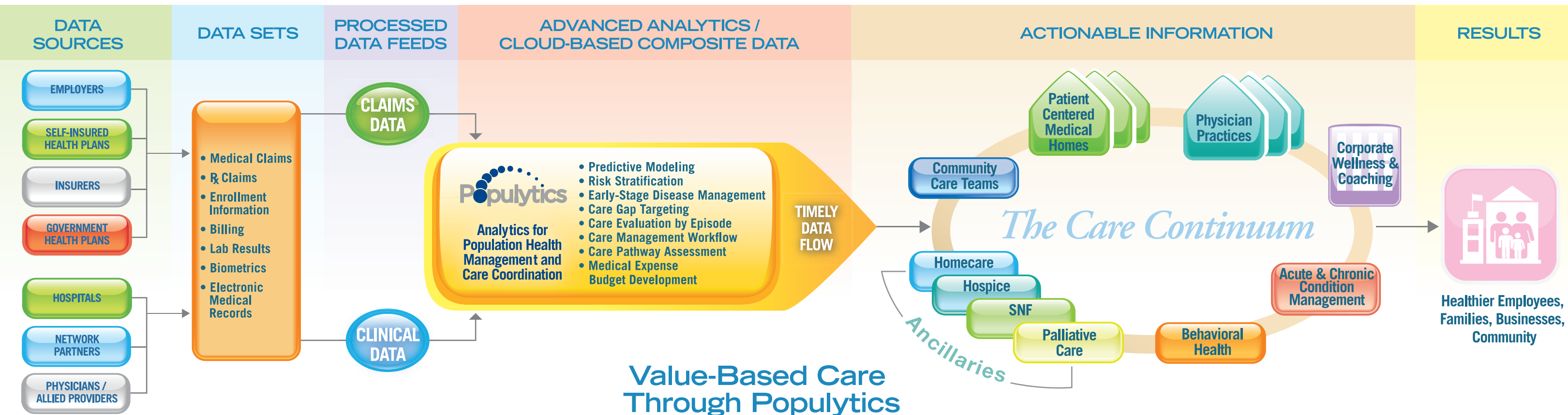
Populytics BENEFITS:

For Employers:

- Predictive Modeling and Risk Stratification
- Improved Care Coordination
- Ongoing Evaluations to Track Health Status of Employee Populations and Effectiveness of Health and Wellness Programs
- Optimized Compensation from Insurance and Government Payers
- Healthier Employees.
- Higher Productivity.
- Improved Health Cost Management

For Employees and Families:

- Earlier Diagnosis and Opportunities for Preventive Care
- Easier, More Timely Access to Appropriate Care
- Consistently Improved Care Quality and Patient Satisfaction
- Access to Wider Range of Care and Community Health Services to Which Individuals are Entitled
- Healthier Individuals.
- Lower Health Costs for Families.
- Healthier Communities.



Logically Asked Questions

- **What does Population Health Management (PHM) really mean?**

PHM makes the difference between proactive and reactive health care. Instead of a focus on reacting to single episodes of care, PHM's goal is to proactively maintain the health of a defined group of individuals (a population) and minimize the need for costly hospitalization and medical treatment. PHM relies on information (analytics) about the population and its risks, health care engagement and the practices of care providers. Properly implemented, the PHM approach improves the health of populations and the individual patient experience while controlling the cost of care.

- **What does it mean to move from “volume to value”?**

In the traditional health care economic model, most providers are paid on a fee-for-service basis. As such, compensation is driven by volume.

Recognizing that this old paradigm is no longer effective or sustainable, health care delivery and reimbursement models are changing to a value-based system. Now, provider payment will be influenced by quality outcomes of care and the health of populations.

- **Why is a new analytics system needed? Hasn't information always been available through medical records and claims data?**

Population health management is a new discipline requiring new tools. Claims and clinical data must be assessed and synchronized as never before. Populytics' analytics system is built to take disparate data feeds and coalesce them in meaningful ways, allowing coordinated analysis by clinicians, health scientists and claims management experts. Their actions shape the delivery of care to individual patients and the broader population.

Populytics serves as data aggregator, care experience analyst, performance activator and outcomes assessor. In short, Populytics translates data into meaningful action to drive healthier outcomes.

- **How will Populytics help providers improve care delivery?**

The new level of information generated by Populytics will allow primary care physicians and other providers across the care continuum to focus on early diagnosis and preventive care. By keeping patients healthier, providers can reduce the risks and costs of high utilization by targeted populations.

Populytics also provides clinical pathway and benchmarking tools to inform consistent, evidence-based care. These allow for the development of models to support care delivery across the health spectrum—from prevention through chronic condition management.

- **Does Populytics replace Spectrum Administrators?**

Populytics is built on Spectrum's 26-year history of managing health care with expertise and responsive service. The Spectrum Administrators name has become Populytics. The Spectrum leadership team and technology has been significantly strengthened to meet Populytics' commitments to provide advanced population health management and coordination of care.

- **How does this change from Spectrum Administrators to Populytics benefit employers sponsoring self-funded health plans?**

Health plan design and administration remains the core of Populytics' service offerings. But we have clearly grown beyond the term “third party administrator.” Our new range of services, technology and expertise is much broader as Populytics.

We have always considered loss prevention and risk control as the strategic keys to successful self-funded health plans, employee health and company productivity. By adding new tools and expertise, Populytics can now precisely identify plan members who would benefit from clinical or coaching interventions. We can now engage these individuals and their providers at all time stages of each illness episode—before, during and after.

Populytics results:

- Healthier, motivated, more productive plan members
- Enhanced workplace culture
- A company benefit plan that remains affordable

- **What services will Populytics provide to health networks and insurance payers?**

Despite the importance of the population health approach, it will not be widely adopted until new financial incentives in the health care industry are understood and actuated. Populytics' tools and our multi-disciplinary team will support health care provider networks in the journey to accountable care. We will provide both payers and providers with mutually-recognized metrics needed to develop new payment strategies, including the identification and measurement of the most influential performance outcomes.

Insurers, employers, providers and patients/health plan members are all stakeholders in the new paradigm driven by Population Health Management. Populytics is the vehicle for collaboration by all stakeholders...and the key to a successful, sustainable future for community health care.



Populytics

c/o Spectrum Administrators, Inc.

PO Box 1830 • 2100 Mack Boulevard

Allentown, PA 18105

484.884.0410 • info@populytics.com

For More Facts, Visit: www.populytics.com